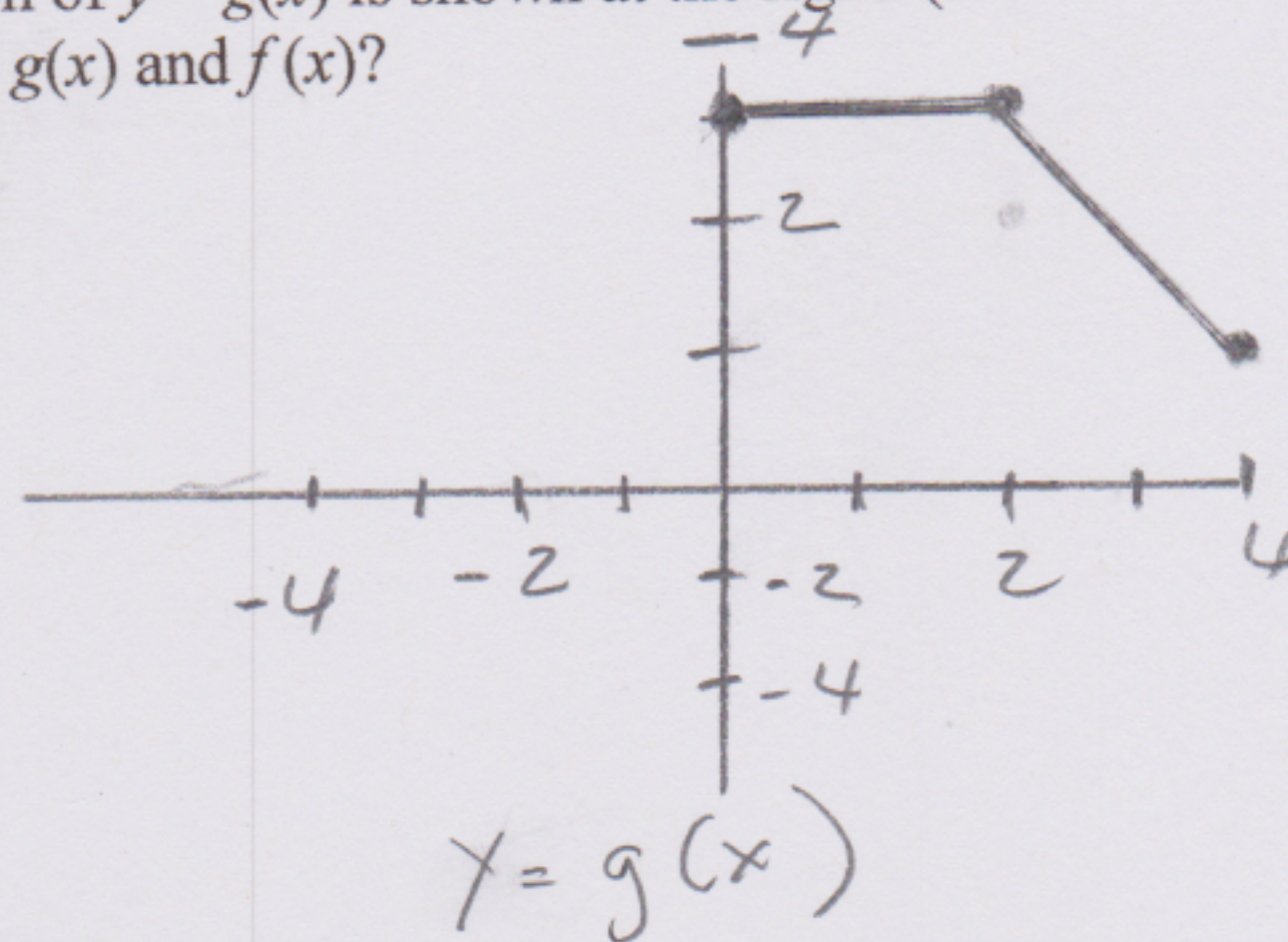
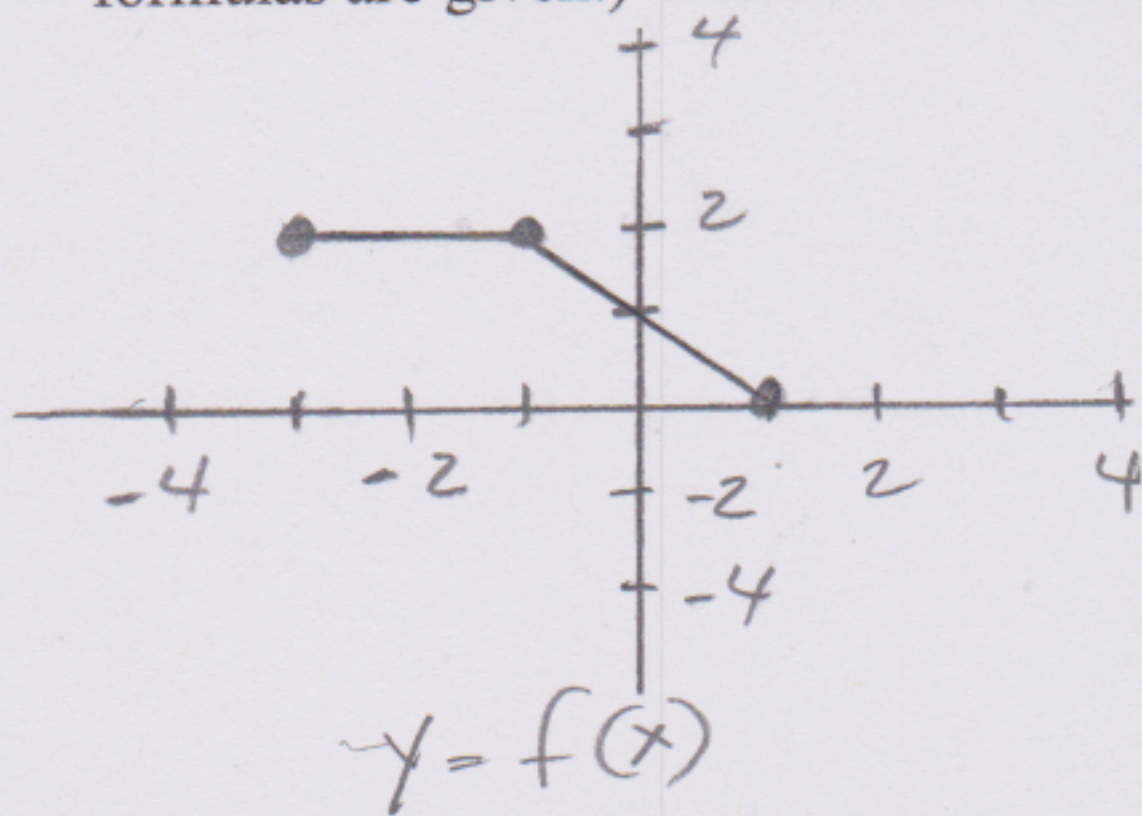


The graph of  $y = f(x)$  is shown at the left and the graph of  $y = g(x)$  is shown at the right. (No formulas are given.) What is the relationship between  $g(x)$  and  $f(x)$ ?



The correct answer will be?

- A.  $g(x) = f(x - 1) + 3$
- B.  $g(x) = f(x - 3) + 1$
- C.  $g(x) = f(x + 3) - 1$
- D.  $g(x) = f(x + 1) - 3$